

Emory University School of
Medicine
IMPAACT Site 5030



EMORY
UNIVERSITY
SCHOOL OF
MEDICINE



Background

- Joined as an IMPAACT Site in Spring 2014
- NICHD/ Westat funded
- Based within School of Medicine, Department of Pediatric Infectious Diseases

Background

- GA ranked **5th highest** in nation for overall total number new HIV infections – n=2640 (2014)
- Adolescent Prevalence
 - 23% among youth between 13-24 years
 - 65% were Black
 - 75% of male diagnoses were in MSM
- Maternal and Infant Prevalence
 - 12,801 females
 - 181 children < 13 years old (vast majority perinatally infected)
- An estimated 250-300 HIV-positive women giving birth each year in GA
- **35** newly diagnosed perinatal HIV infections in GA (2010-2014)

Staff



Paul Spearman, MD



Rana Chakraborty, MD, MSc, FAAP, DPhil



Andres Camacho-Gonzalez, MD, MSc



Martina Badell, MD, MFM



Ann Chahroudi, MD, PhD



Lisa Cranmer, MD, MPH



LaTeshia Thomas-Seatton, Research Nurse

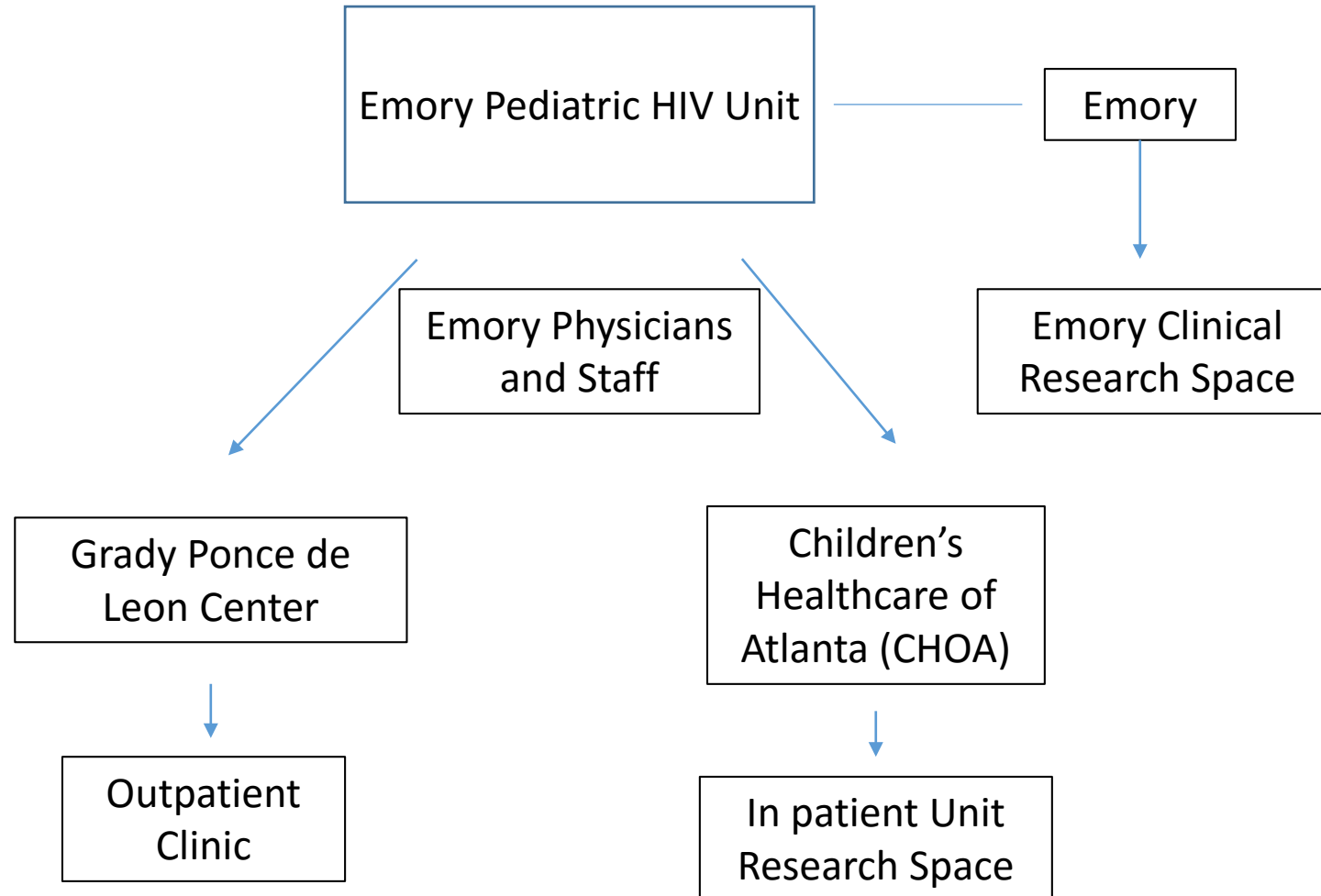


Alexis Daugherty, Research Nurse



Bridget Wynn, Site Manager

Emory Pediatric HIV Unit



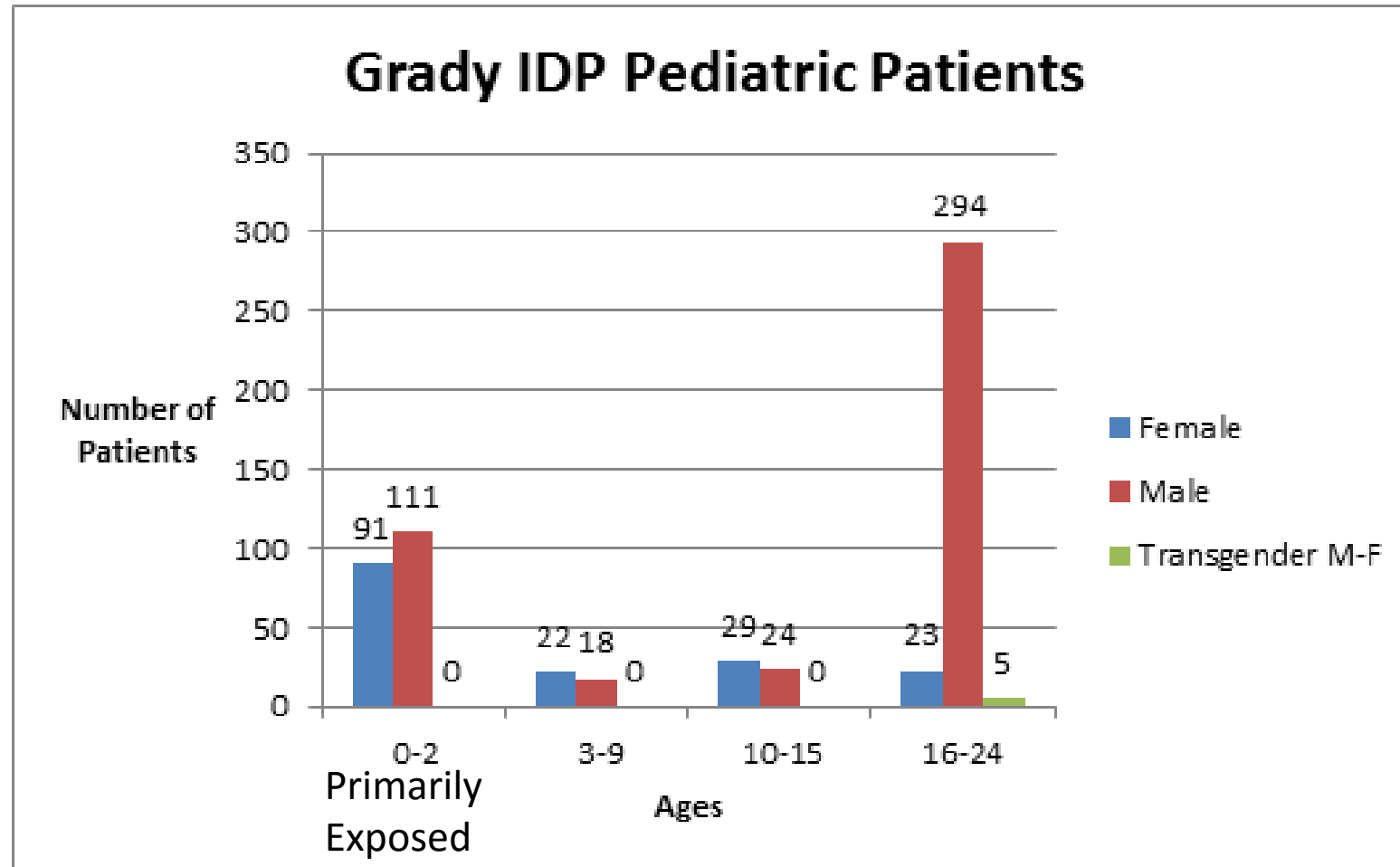
Grady

- We work closely with the Grady Ponce de Leon Clinic, a publically funded tertiary HIV Care Clinic
- Main clinic, women's and pediatric clinic, psych, social work, and research
- ~5,000 total patients
- ~2,000 women
- ~700 pediatric patients

- OB and Delivery for HIV infected women



Pediatric Patients



Collaborations

- Health Department
- HIV Community Groups
 - AID Atlanta
 - Positive Impact
 - AIDS Healthcare foundation
 - Latino Linq
- Metro Atlanta Birthing Hospitals

Emory Research Networks

- Emory ACTG
- Emory HPTN
- Emory VTEU

IMPAACT Studies

Up and Running:

- P1080
- P1093
- P1081
- P1026s
- P1112
- P1115
- TIES

In Process:

2011

P1110

P1097

P1107

Future:

2002

2012, 2013

2015

Challenges

- Developing Infrastructure
- Collaborations with other hospitals
- Starting up so many protocols at once
- Learning the system
- Patient Population