


**An Introduction to the
IMPAACT Network
Operations Center's
Community Engagement
Program**

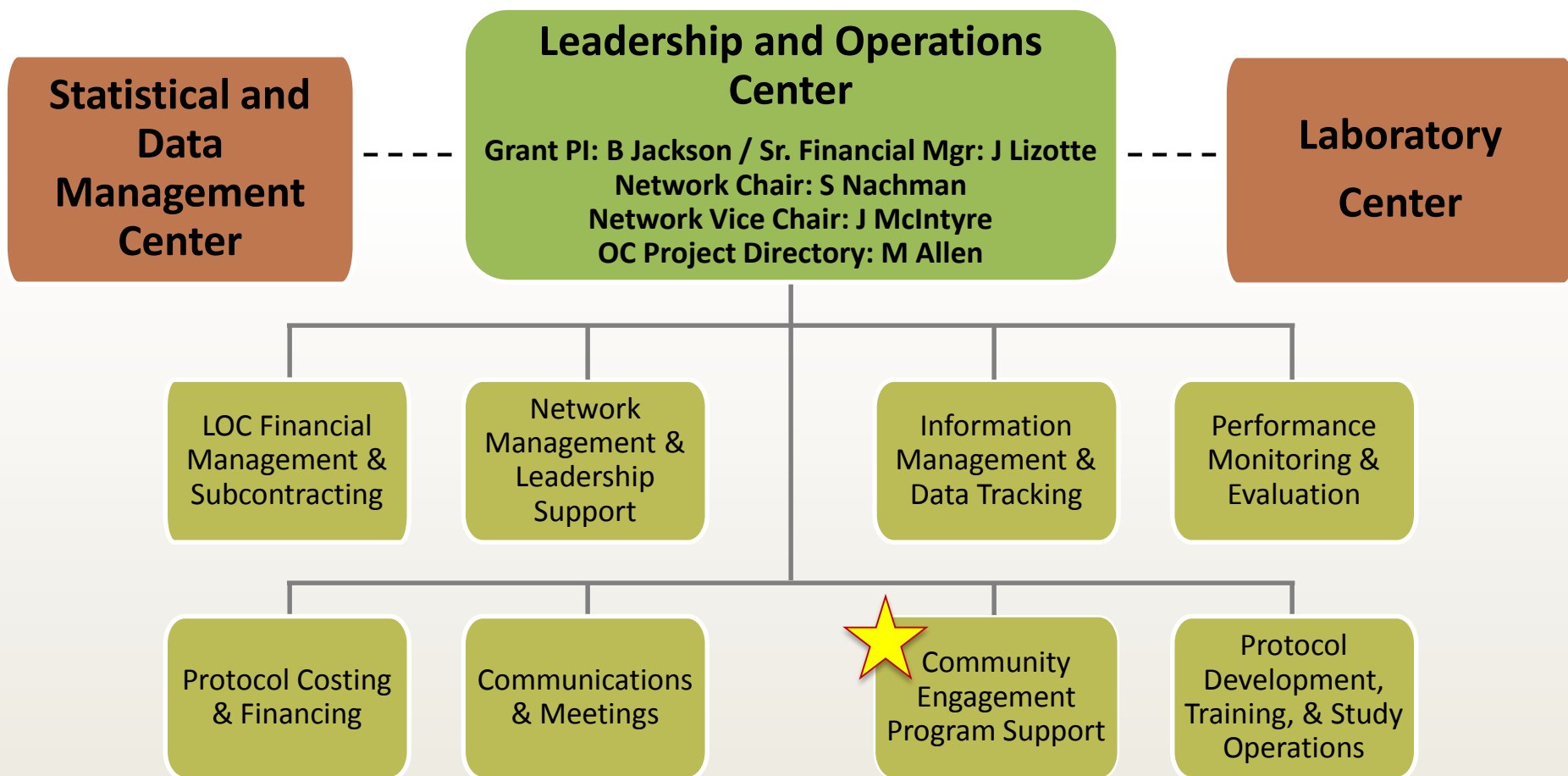
A woman with a headwrap, wearing a blue and yellow shirt, carries a baby wrapped in a green cloth. She is holding a large black basket filled with purple eggplants. In the background, there is a wooden stand with a bowl of red tomatoes and several green watermelons. The setting appears to be a rural market or a farm stand.

FHI 360 is a non-profit organization dedicated to improving lives in lasting ways by advancing integrated, locally driven solutions for human development

MISSION

FHI 360's Role in IMPAACT

Leadership and Operations Center Functions



IMPAACT Operations Center (Ops)

The IMPAACT Operations Center...

- Supports the development, implementation and reporting of all IMPAACT scientific protocols.
- Provides a central point of coordination, communications, and support to the IMPAACT Leadership Group and all network committees, protocol teams, and working groups.
- Oversees issues related to community engagement and participation in the IMPAACT Network
- Helps coordinate partnership with community representatives throughout all levels of IMPAACT research efforts.

IMPAACT Leadership Operations Center Community Engagement Program Staff



IMPAACT Community Engagement Program Structure

IMPAACT Community Program

```
graph TD; A[IMPAACT Community Program] --> B[IMPAACT LOC Community Engagement Program Staff]; A --> C[IMPAACT CAB (ICAB) Leadership Group (ILG)]; C --> D[IMPAACT Community Advisory Board (ICAB)];
```

**IMPAACT LOC
Community
Engagement
Program Staff**

**IMPAACT CAB (ICAB)
Leadership Group (ILG)**

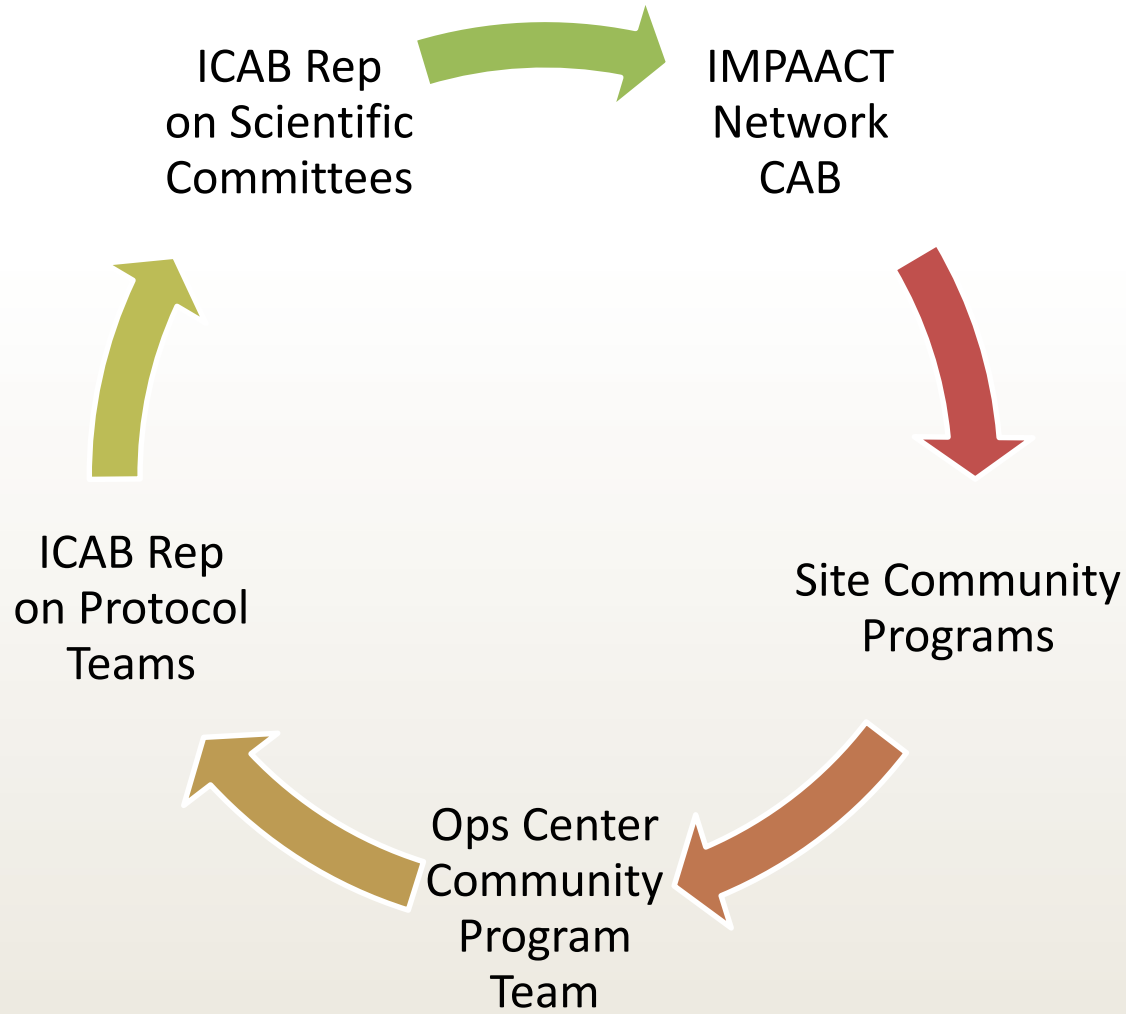
**IMPAACT Community
Advisory Board (ICAB)**

OC Community Engagement Staff Roles and Responsibilities

- Provide support for the ILG and ICAB.
- Advocate for community engagement.
- Assess community education activities and advisory processes.
- Assess and respond to technical assistance needs.
- Provide guidance and research training.
- Integrate community participation at site and Network levels.
- Community Program Staff jointly assigned to HPTN and MTN



Community Engagement in IMPAACT Network



Guiding Principles

Respect

Mutual
Understanding

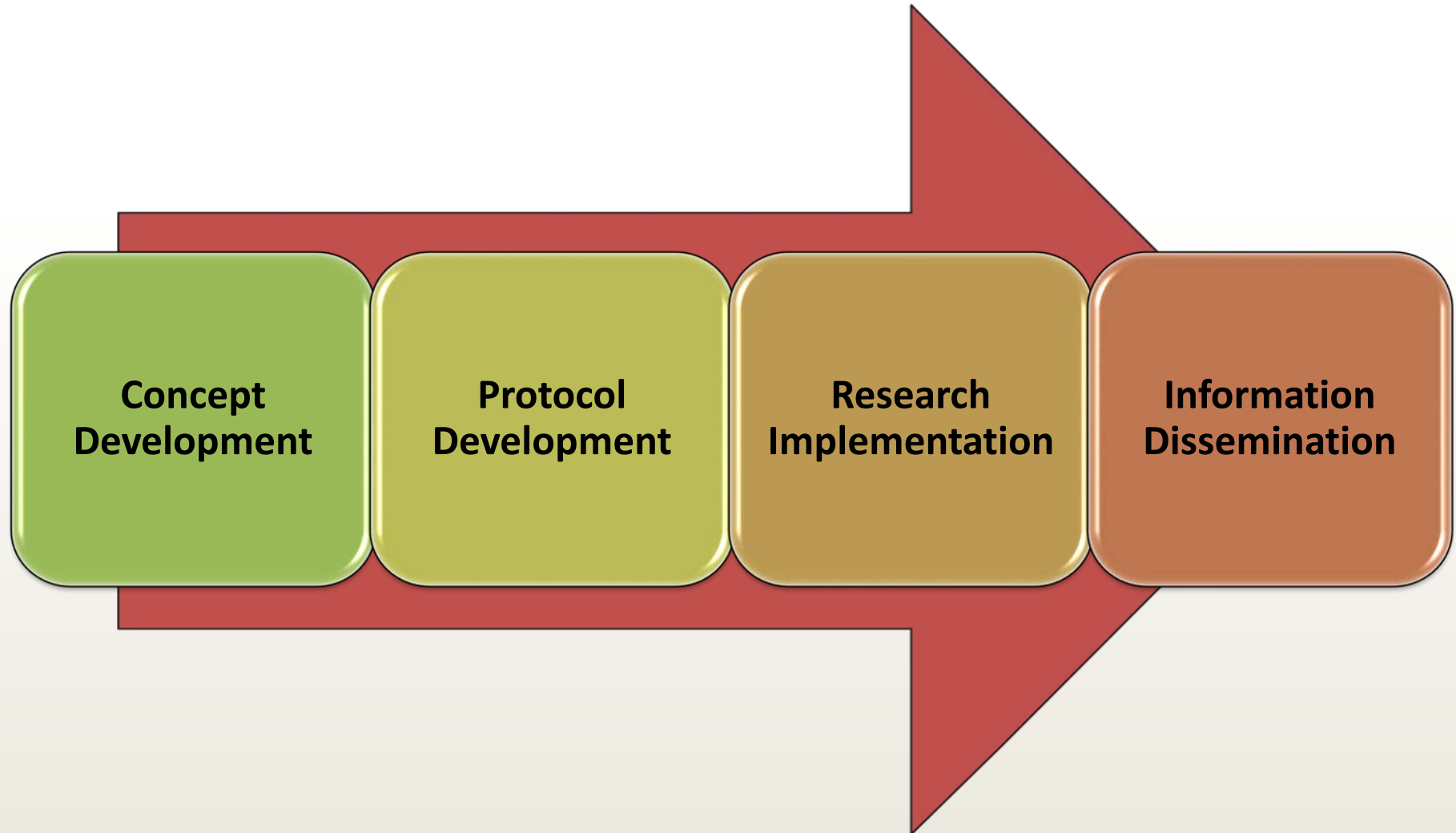
Integrity

Transparency

Accountability

Autonomy

Partnerships in Research



Contact Information

- IMPAACT Ops Center Community Engagement Program Team (messages directed to full team)
 - IMPAACT.OPSCAB@fstrf.org
- Cheryl D. Cokley, IMPAACT Community Point-of-Contact
 - ccokley@fhi360.org