

Future Directions for Treatment of Depression and Anxiety in Adolescents Living with HIV

Mindfulness Based Real-time Neurofeedback: *A novel Personalized Network-Based Intervention*

Susan Whitfield-Gabrieli
Professor of Psychology, Northeastern University
Director: Northeastern University Biomedical Imaging Center
Research Appointments @
Poitras Center for Psychiatric Disorders,
McGovern Institute for Brain Research, MIT
MGH Psychiatry, Harvard Medical School



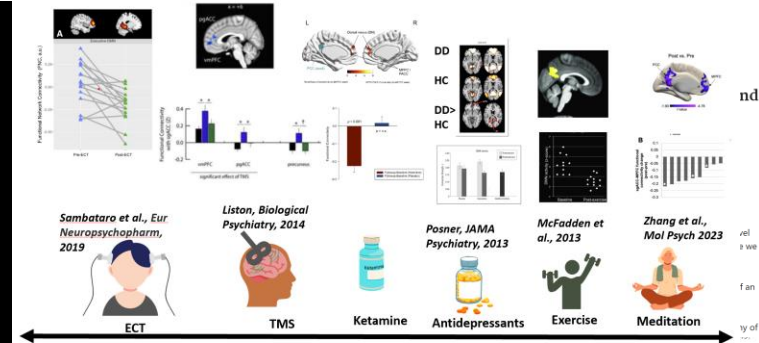
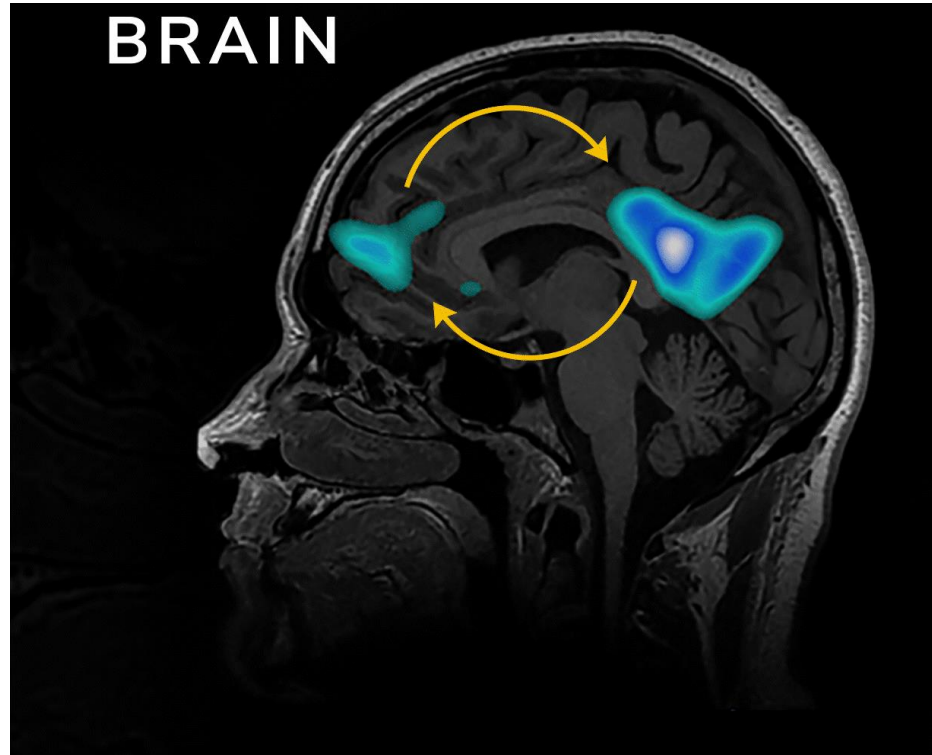
IMPAACT

International Maternal Pediatric Adolescent
AIDS Clinical Trials Network

ANNUAL MEETING
2023

The Default Mode Network

2



nature mental health

View all journals Search Log in

Explore content About the journal Publish with us

nature > nature mental health > correspondence > article

Correspondence | Published: 05 October 2023

Tuning the default mode network with behavioral interventions to address the youth mental health crisis

Susan Whitfield-Gabriell & A. Eden Evins

Nature Mental Health 1, 695–696 (2023) | Cite this article

Clinical Effectiveness and Cost-Effectiveness of Supported Mindfulness-Based Cognitive Therapy Self-help Compared With Supported Cognitive Behavioral Therapy Self-help for Adults Experiencing Depression The Low-Intensity Guided Help Through Mindfulness (LIGHTMind) Randomized Clinical Trial

Clara Strauss, PhD, DClInPsy; Anna-Marie Bibby-Jones, PhD; Fergal Jones, PhD, DClInPsy; Sarah Byford, PhD; Margaret Heslin, PhD; Glenys Parry, PhD, DipClInPsych; Michael Barkham, PhD; Laura Lea, MSc; Rebecca Crane, PhD; Richard de Visser, PhD; Amy Arbon, MSc; Claire Rosten, PhD; Kate Cavanagh, PhD, DClInPsy

JAMA Psychiatry | [Original Investigation](#)

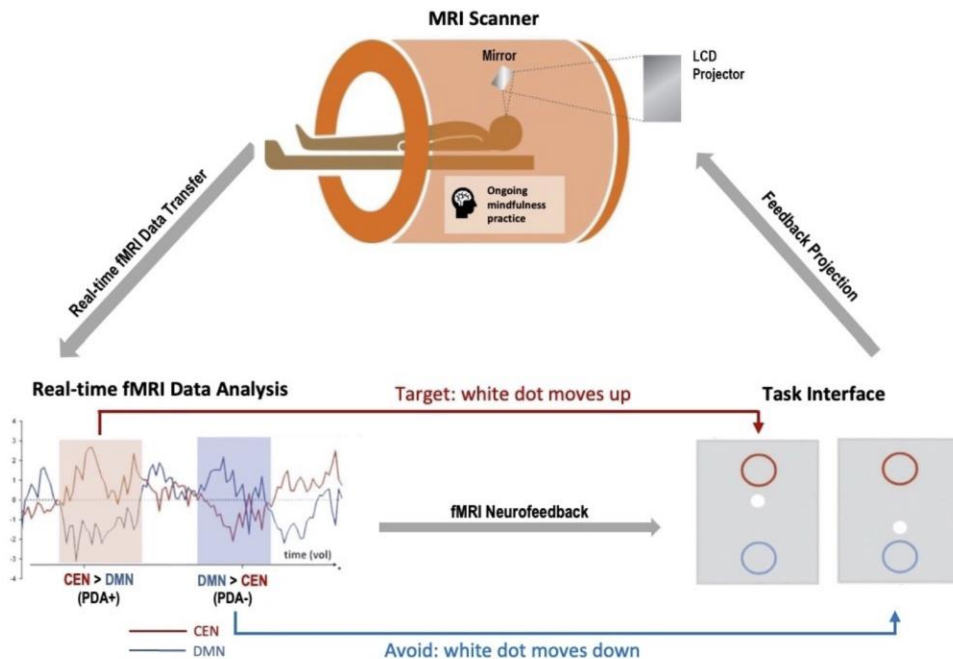
Mindfulness-Based Stress Reduction vs Escitalopram for the Treatment of Adults With Anxiety Disorders A Randomized Clinical Trial

Elizabeth A. Hoge, MD; Eric Bui, MD, PhD; Mihriye Mete, PhD; Mary Ann Dutton, PhD; Amanda W. Baker, PhD; Naomi M. Simon, MD, MSc

Real-time Neurofeedback

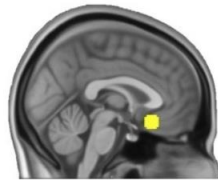
Mindfulness based real-time fMRI Neurofeedback: MbNF

4

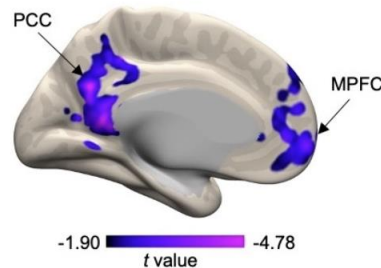


MbNF Reduces DMN Connectivity in Adolescent Anxiety/Depression

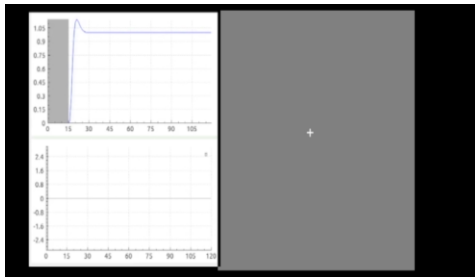
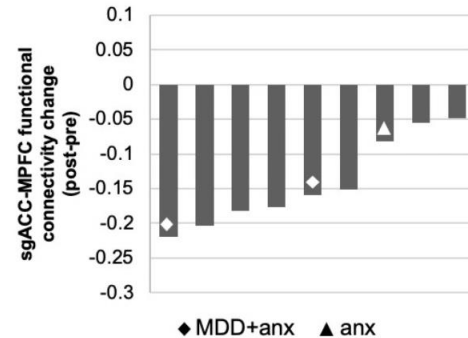
A sgACC seed



B Group-Level Connectivity reduction



C Participant-Level Connectivity reduction



THANKS!



BANDA
Boston Adolescent Neuroimaging
of Depression & Anxiety



 Clemens Bauer	 Jiahe Zhang	 Francesca Morfini	 Clare Shaffer	 Chelsea Akunwa
 Alfonso Nieto Castañón	 Keara Greene	 Katie Evancic	 Jude Hammoud	 Vanessa Cha
 Zhenghan Qi	 Yoon Lee	 Zoi Urban	 Emma Tusuzian	 Nita Akoh

Rt-fMRI Feedback

 Margaret Niznikiewicz	 Ann Shinn	 Randy Auerbach	 Clemens Bauer	 Jiahe Zhang	 Saita Ghosh	 Kana Okano
---	---	--	---	---	---	--

NIB R61R331; MH113751-01A1 © NIB RO1 MH1148-01; R56-MH121426-01; U24 RFA-M

Any questions?

You can find me at

- ▶ S.whitfield-gabrieli@northeastern.edu